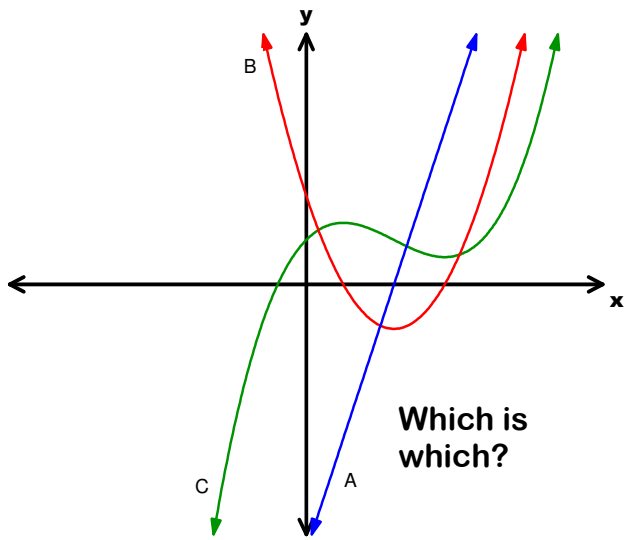
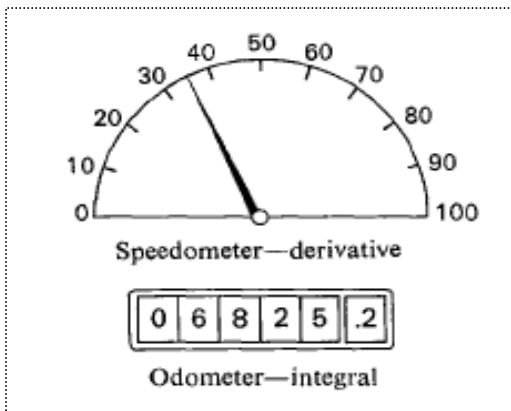


AP Calculus Review Splash



$$\int x \cos x \, dx$$

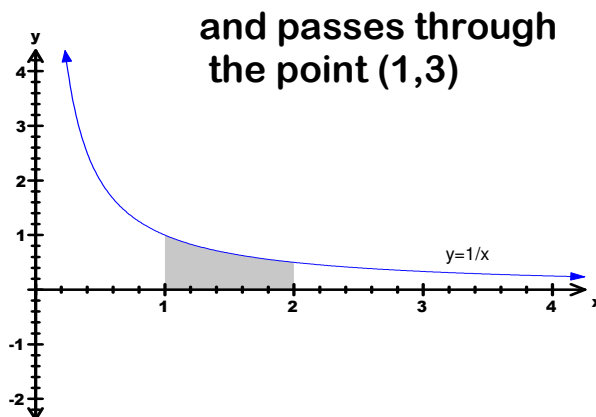


$$\lim_{x \rightarrow 0} \frac{\sin(2x)}{x}$$

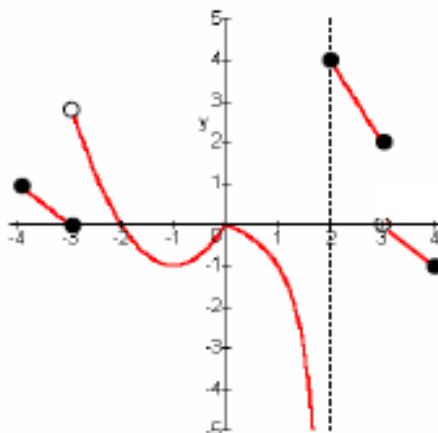
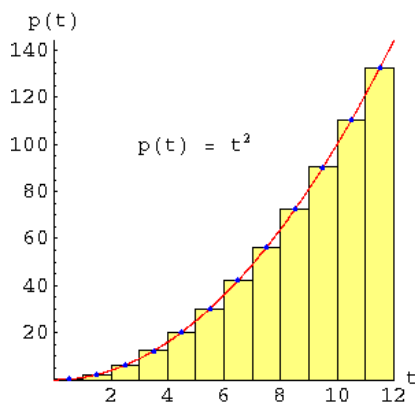
$$x^2 y + xy^2 = 6$$

$$dy/dx =$$

Point of Inflection



Intermediate Value Theorem



$$\int_0^4 |x - 2| \, dx$$